

DEVELOPMENT AND IMPLEMENTATION OF SCHOLARLY CONCENTRATIONS FOR INDIVIDUALIZED MEDICAL STUDENT EXPERIENCE



WAYNE STATE
School of Medicine

Jenna Carter¹, Michael Franklin², Cooper Laurain², Richard Baker, M.D.³, Jason Booza Ph.D.³, Steven Daveluy, M.D.⁴, Sonia Hassan, M.D.⁵, Diane Levine M.D.⁶, Jennifer Mendez Ph.D.⁷, Ijeoma Nnodim Opara, M.D.⁸, Senthil Rajasekaran, M.D.³, Latonya Riddle-Jones, M.D.⁸, Joseph Dunbar, Ph.D.⁹

¹Wayne State University School of Medicine, MD/PhD Program, ²Wayne State University School of Medicine, MD Program, ³Wayne State University School of Medicine, ⁴Wayne State University School of Medicine, Department of Dermatology, ⁵Wayne State University, Department of Obstetrics and Gynecology, ⁶Wayne State University School of Medicine, Department of Internal Medicine, ⁷Wayne State University School of Medicine, Director of Community Engagement, ⁸Wayne State University School of Medicine, Department of Internal Medicine, Internal-Medicine Pediatrics section, ⁹Wayne State University School of Medicine, Director of Office of Medical Student Research

INTRODUCTION

- The ideal medical education includes curricular components that allow academic achievement, skill development, and career exploration for medical students.
- Recently, there has been a desire to enhance medical education by offering individualized educational experiences.
- This need has grown since the movement of USMLE STEP 1 to be a pass/fail examination.
- We sought to accommodate this through the development of scholarly concentrations (SCs) at Wayne State University School of Medicine (WSUSOM).

SCHOLARLY CONCENTRATIONS AT WSUSOM

- SCs are longitudinal academic experiences that parallel the core medical curriculum with an overall goal of fostering curiosity, independence, leadership, and discovery.
- They create an individualized opportunity for students to explore subjects beyond the conventional medical school curriculum.
- The purpose is to allow academic enhancement, skill development, and career exploration through cultivating habits of scholarly research and inquiry.
- Through self-directed learning paired with engaged mentorship, students will develop skills to excel in areas of academic medicine, community-based practice, health care policy or emerging technologies.
- The SCs developed at WSUSOM include Basic Science Research, Clinical Science Research, Medical Education, Women's Health, Public Health Advocacy and Community Engagement, and Global Health (Fig. 2).
- The SC programs will be available for optional participation in a pilot phase starting in the 2020-2021 academic year.

METHODS

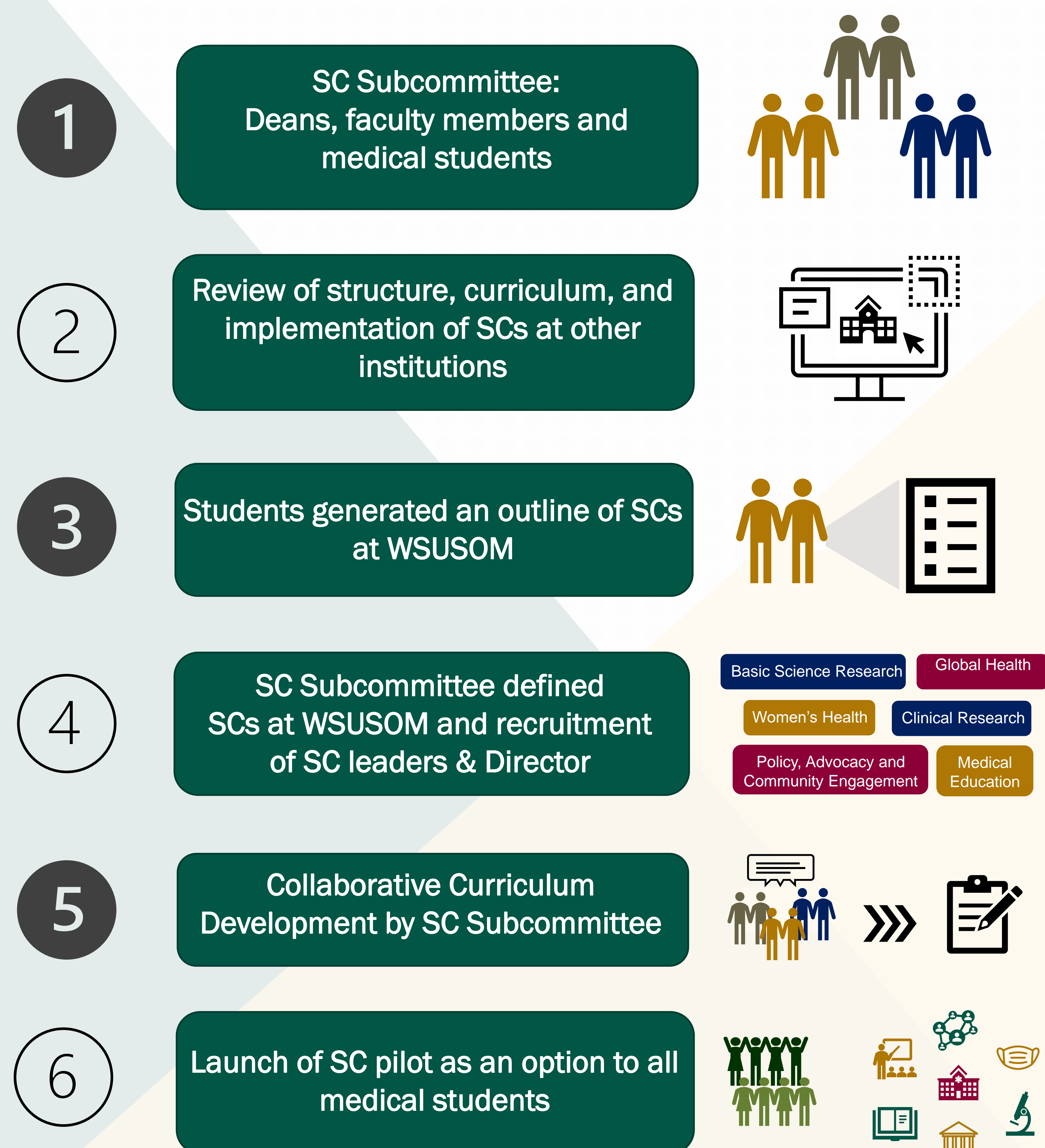


Figure 1: Scholarly Concentrations Development Process

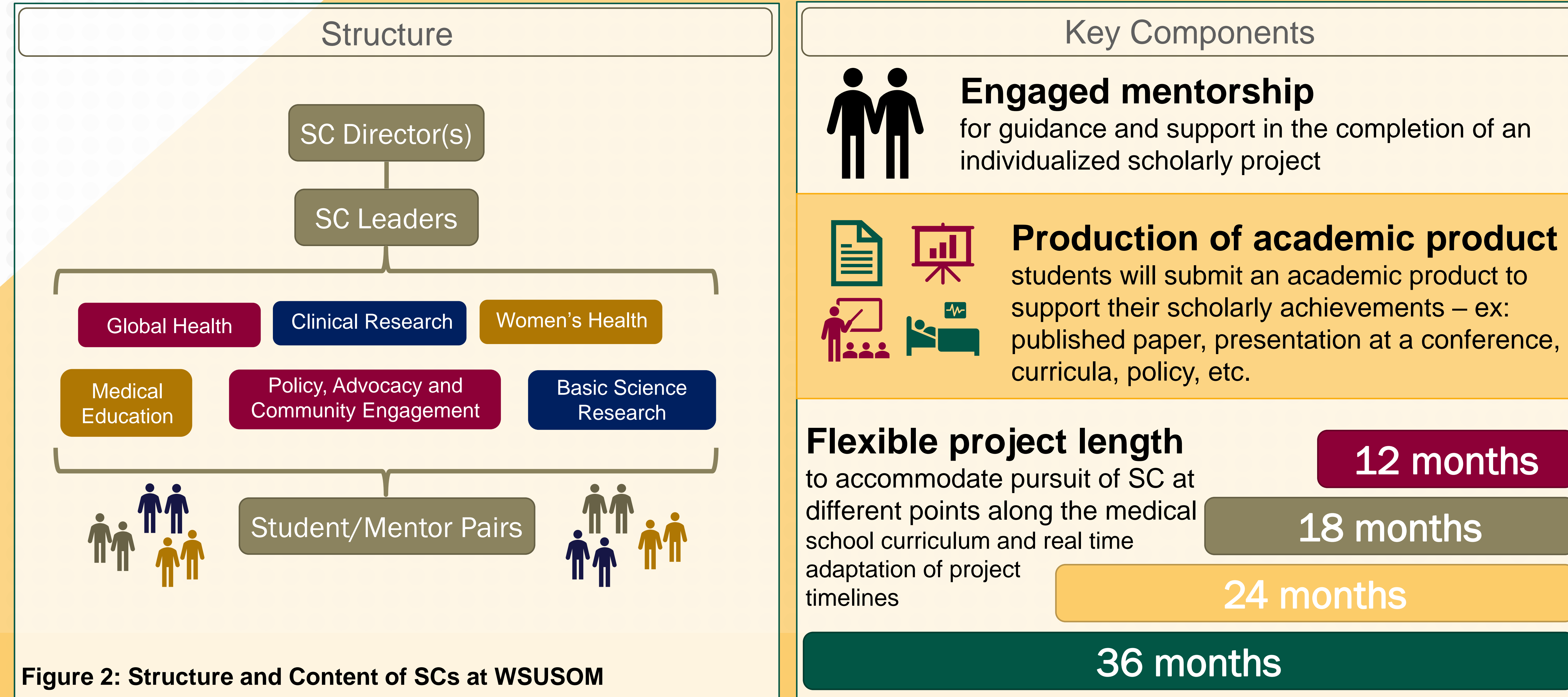


Figure 2: Structure and Content of SCs at WSUSOM

ANALYSIS & EVALUATION PLAN

Evaluation of Student Performance

- Final evaluation of students will be multifaceted:
- Academic product
 - Student self-assessment
 - Mentor assessment of the student in SC competencies
 - Student reflection on how participation in the SC has supported future career endeavors
 - Participation in WSUSOM Scholarly Concentration Symposium

Evaluation of SC Effectiveness

- Pre- and post- SC self-assessments on competency in the skills described by the SC learning objectives.
- Collect student & mentor specific goals at the beginning of each project for assessment of individualized scholarly achievements
- Survey of satisfaction with the program at multiple time points
- Surveying students upon graduation if SC participation improved educational experience and perceived competitiveness in residency application